

## INTRODUCTION

### 1. GENERAL DESCRIPTION

P/N
MA-121-2

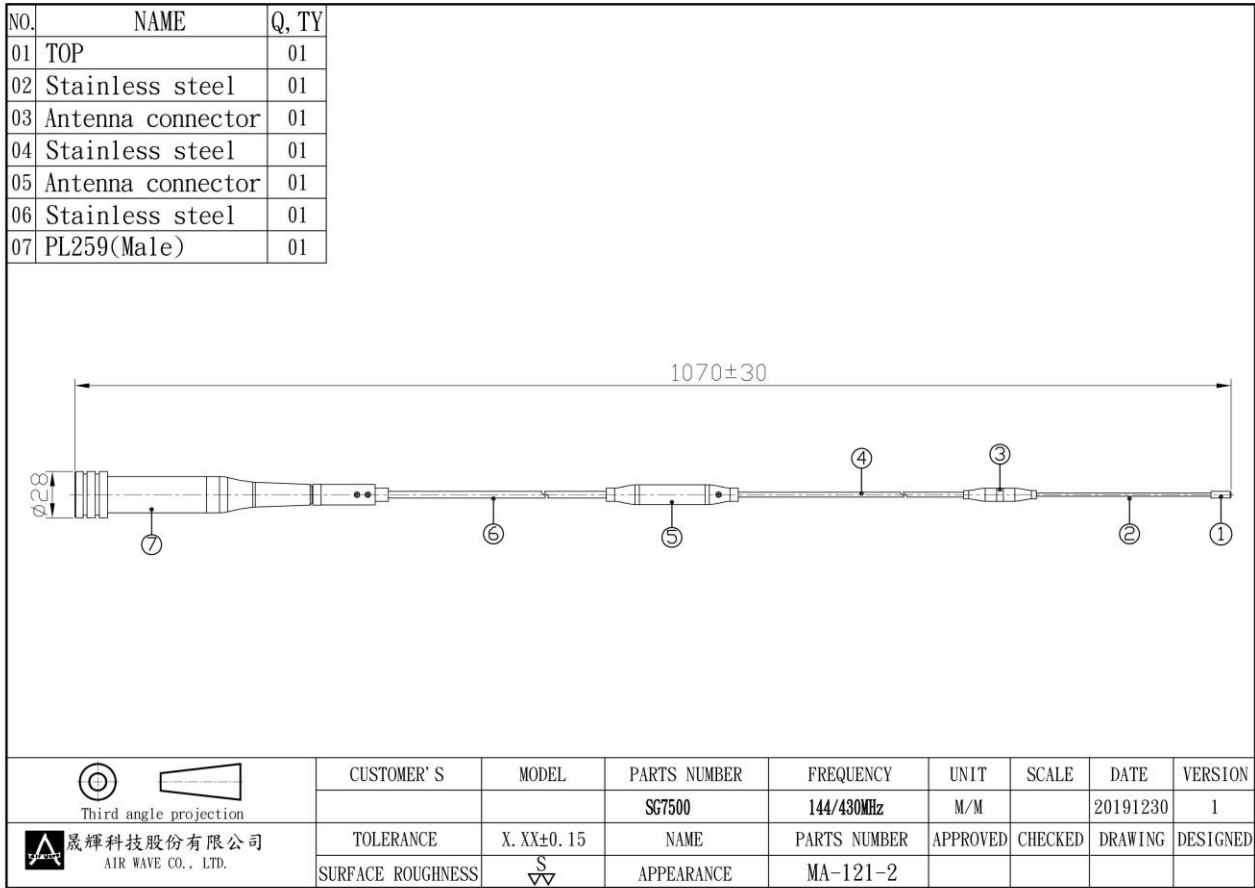
#### 1.1 Electrical Properties

Parameter	Description
Frequency Band	144/430 MHz
Nominal Impedance	50 ohm
Polarization	Vertical
V.S.W.R	2.0 : 1
Gain	3.0/5.5dBi

#### 1.2 Mechanical Properties

Parameter	Description
Antenna Type	External Antenna
Touch Type	Screw Type
Connector Type	PL259(Male)
Antenna Dimensions	1070 mm $\pm$ 30
Operating Temperature Range	-20°C~+60°C
Storage Temperature Range	-30°C~+70°C

## 2. Appearance



### 3. Return Loss, V.S.W.R. and Smith Chart

