

INTRODUCTION

1. GENERAL DESCRIPTION

Model No
EA-292X-B

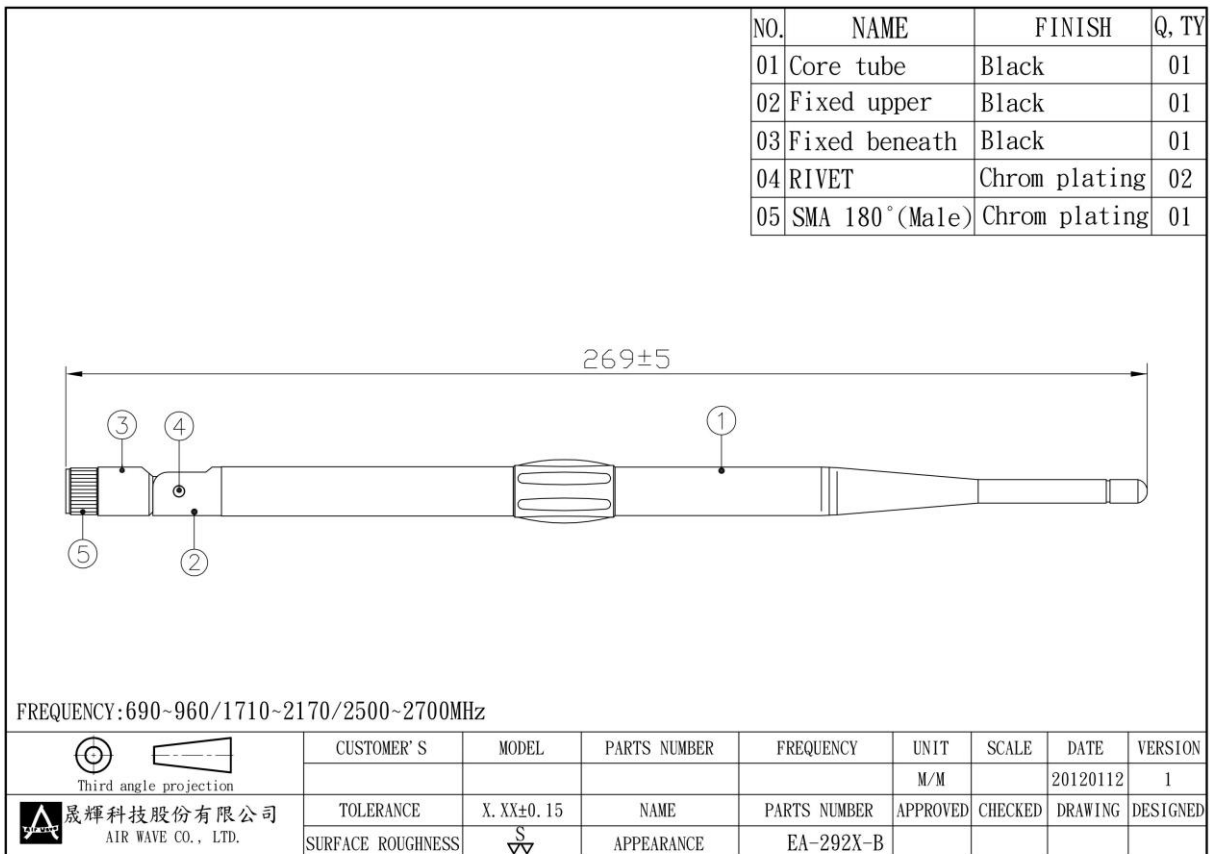
1.1 Electrical Properties

Parameter	Description
Frequency Band	690~960/1710~2170/2500~2700 MHz
Nominal impedance	50ohm
Polarization	Vertical
V.S.W.R	2.1 : 1

1.2 Mechanical Properties

Parameter	Description
Antenna Type	External Antenna
Touch Type	Screw Type
Connector Type	SMA 180° (Male)
Antenna Dimensions	269mm±5
Antenna Color	Black
Operating Temperature Range	-20°C~+55°C
Storage Temperature Range	-30°C~+55°C

2.Appearance



3. Return Loss, V.S.W.R. and Smith Chart

