

## **INTRODUCTION**

### **1. GENERAL DESCRIPTION**

<b>P/N</b>
EA-247C-6C

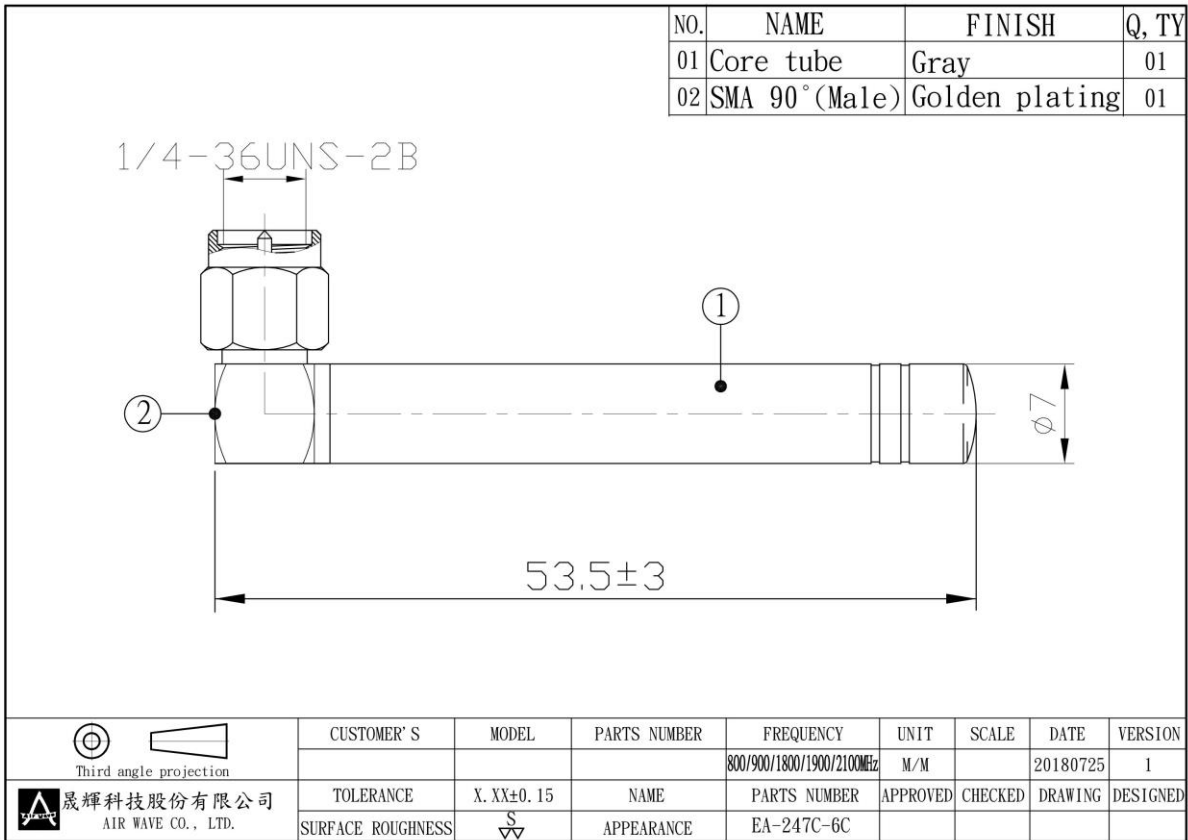
#### **1.1 Electrical Properties**

<b>Parameter</b>	<b>Description</b>
Frequency Band	800/900/1800/1900/2100MHz
Nominal Impedance	50 ohm
Polarization	Vertical
V.S.W.R	2.6 : 1

#### **1.2 Mechanical Properties**

<b>Parameter</b>	<b>Description</b>
Antenna Type	External Antenna
Antenna Material	PU
Touch Type	Screw Type
Connector Type	SMA 90°(Male)
Antenna Dimensions	53.5mm ±3
Antenna Color	Gray
Operating Temperature Range	-20°C~+60°C
Storage Temperature Range	-30°C~+70°C

**2. Appearance**



**3. Return Loss, V.S.W.R. and Smith Chart**

