

---

## INTRODUCTION

### 1. GENERAL DESCRIPTION

AIR WAVE P/N
PF-14F-2

Below is a table summarizing the antenna design specification.

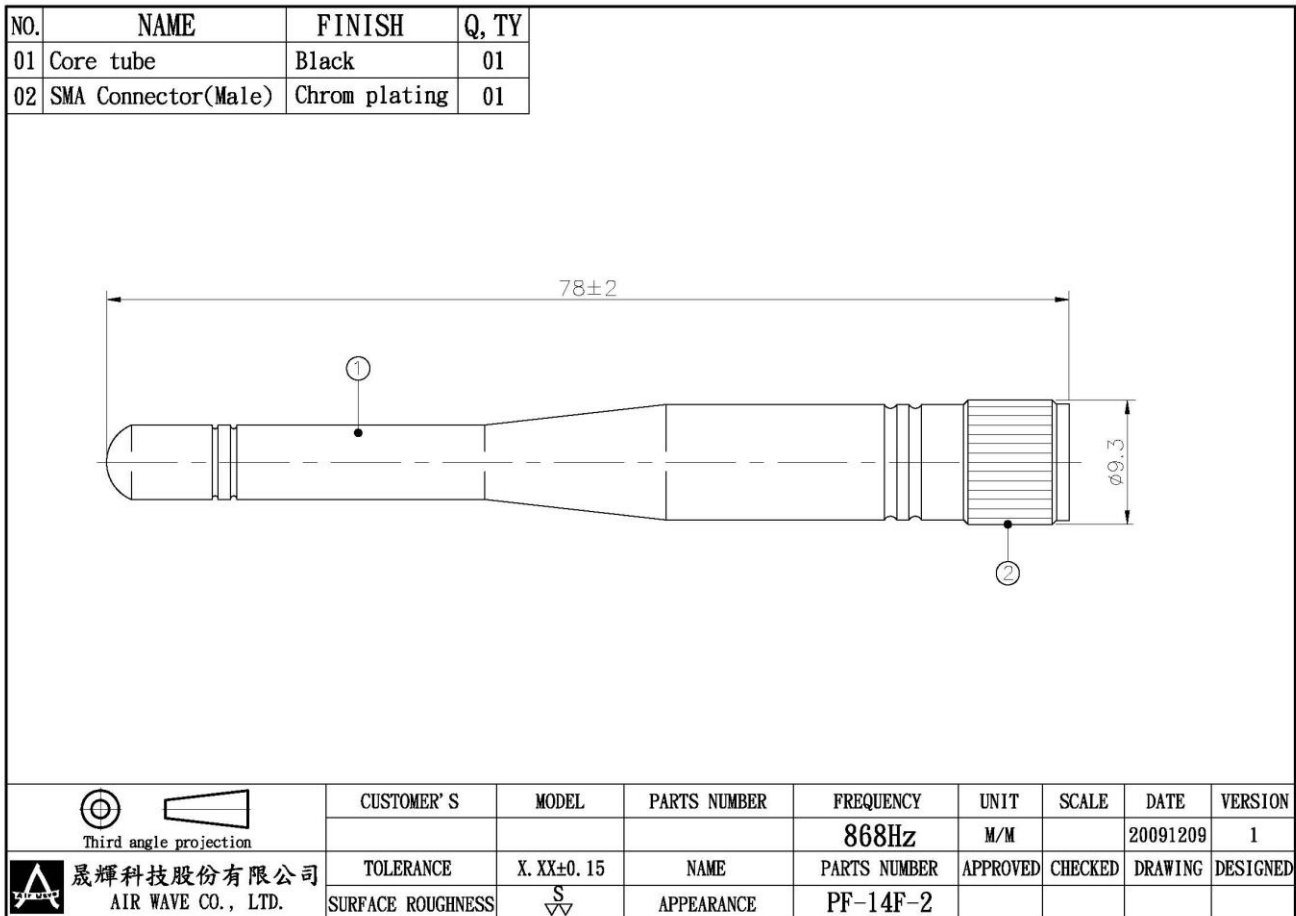
#### 1.1 Electrical Properties

Parameter	Description
Frequency Band	868 MHz
Nominal Impedance	50 ohm
Polarization	Vertical
Return Loss	Please See Data-1
V.S.W.R	2.0 : 1
Note: Gain includes the cable loss	

#### 1.2 Mechanical Properties

Parameter	Description
Antenna Type	External Antenna
Touch Type	Screw Type
Connector Type	SMA Connector (Male)
Antenna Dimensions	78 mm $\pm$ 2
Antenna Color	Black
Operating Temperature Range	-20°C~+60°C
Storage Temperature Range	-30°C~+70°C

**2. Appearance**



3. Return Loss, V.S.W.R. and Smith Chart

