

INTRODUCTION

1. GENERAL DESCRIPTION

P/N
MA-80E-5

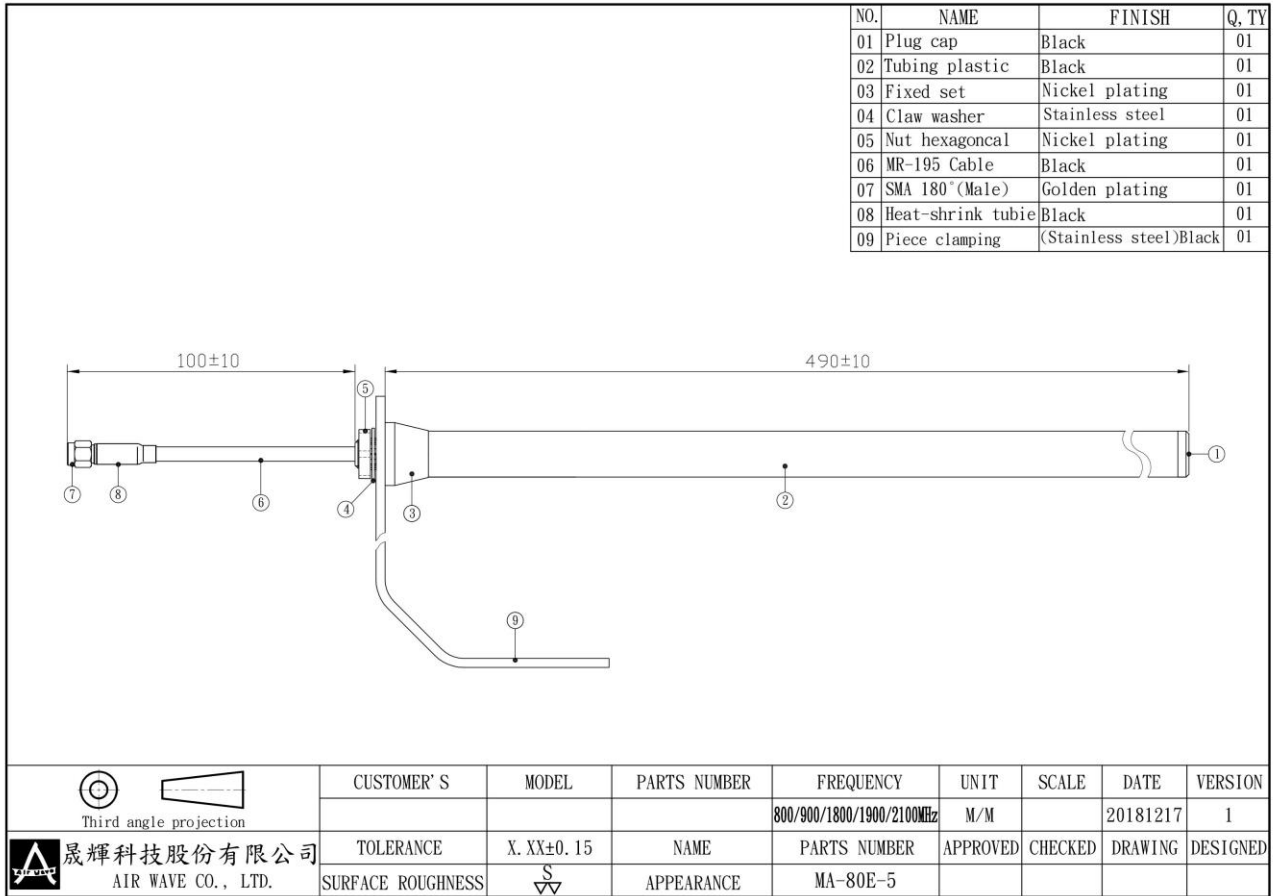
1.1 Electrical Properties

Parameter	Description
Frequency Band	800/900/1800/1900/2100Hz
Nominal Impedance	50 ohm
Polarization	Vertical
V.S.W.R	2.5:1

1.2 Mechanical Properties

Parameter	Description
Antenna Type	External Antenna
Touch Type	Screw Type
Connector Type	SMA 180°(Male)
Antenna Dimensions	490 mm \pm 10
Antenna Cable Total Length	MR-195 Cable/100 mm \pm 10
Antenna Color	Black
Operating Temperature Range	-20°C~+60°C
Storage Temperature Range	-30°C~+70°C

2. Appearance



3. Return Loss, V.S.W.R. and Smith Chart

