

INTRODUCTION

1. GENERAL DESCRIPTION

Model No
YG-31J

Below is a table summarizing the antenna design specification.

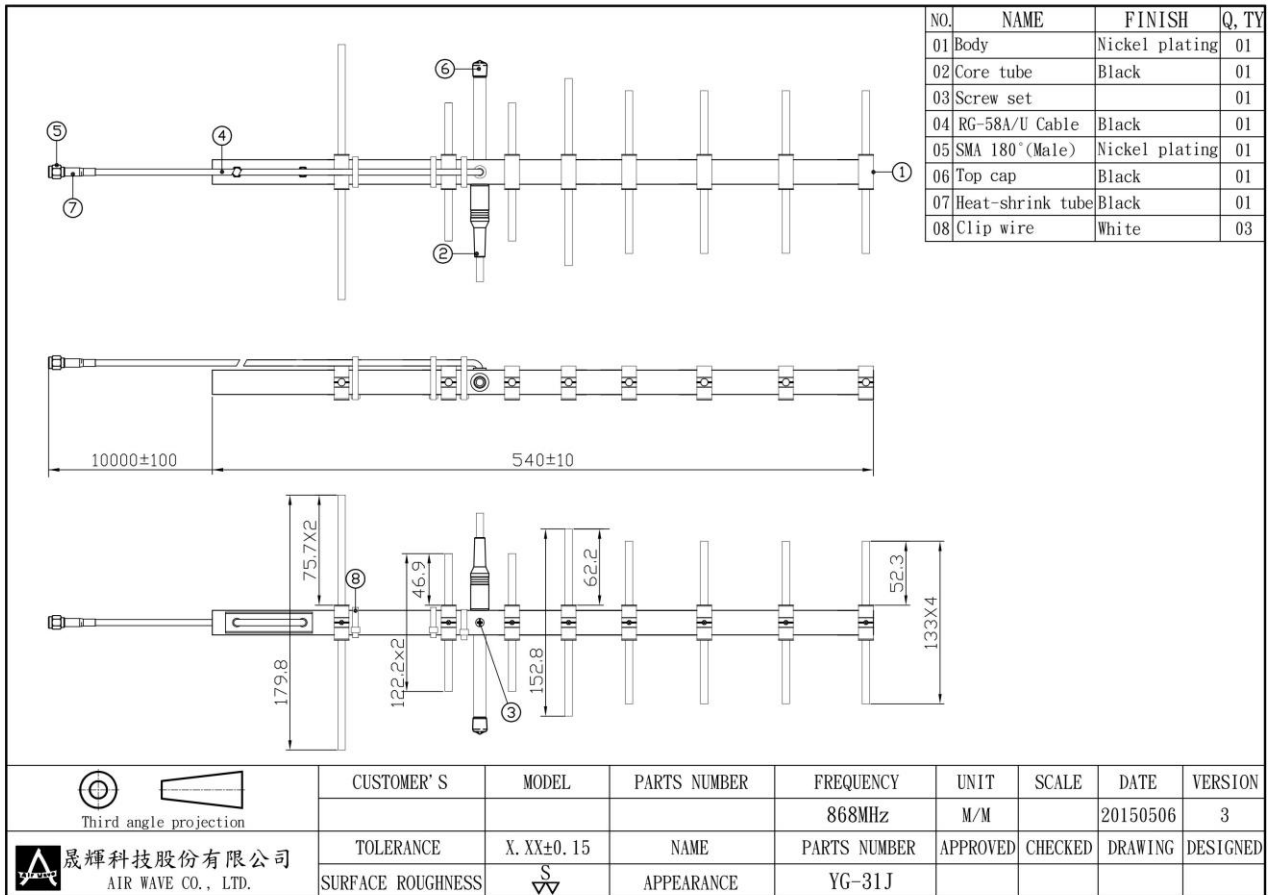
1.1 Electrical Properties

Parameter	Description
Frequency Band	868MHz
Nominal Impedance	50 ohm
Polarization	Vertical
V.S.W.R	2.0:1
Note: Gain includes the cable loss	

1.2 Mechanical Properties

Parameter	Description
Antenna Type	External Antenna
Touch Type	Screw Type
Connector Type	SMA 180° (Male)
Antenna Dimensions	42 mm ±10
Antenna Color	
Operating Temperature Range	-20°C~+60°C
Storage Temperature Range	-30°C~+70°C

2. Appearance



3. Return Loss, V.S.W.R. and Smith Chart

