

## INTRODUCTION

### 1. GENERAL DESCRIPTION

Model No
EA-231C-6C

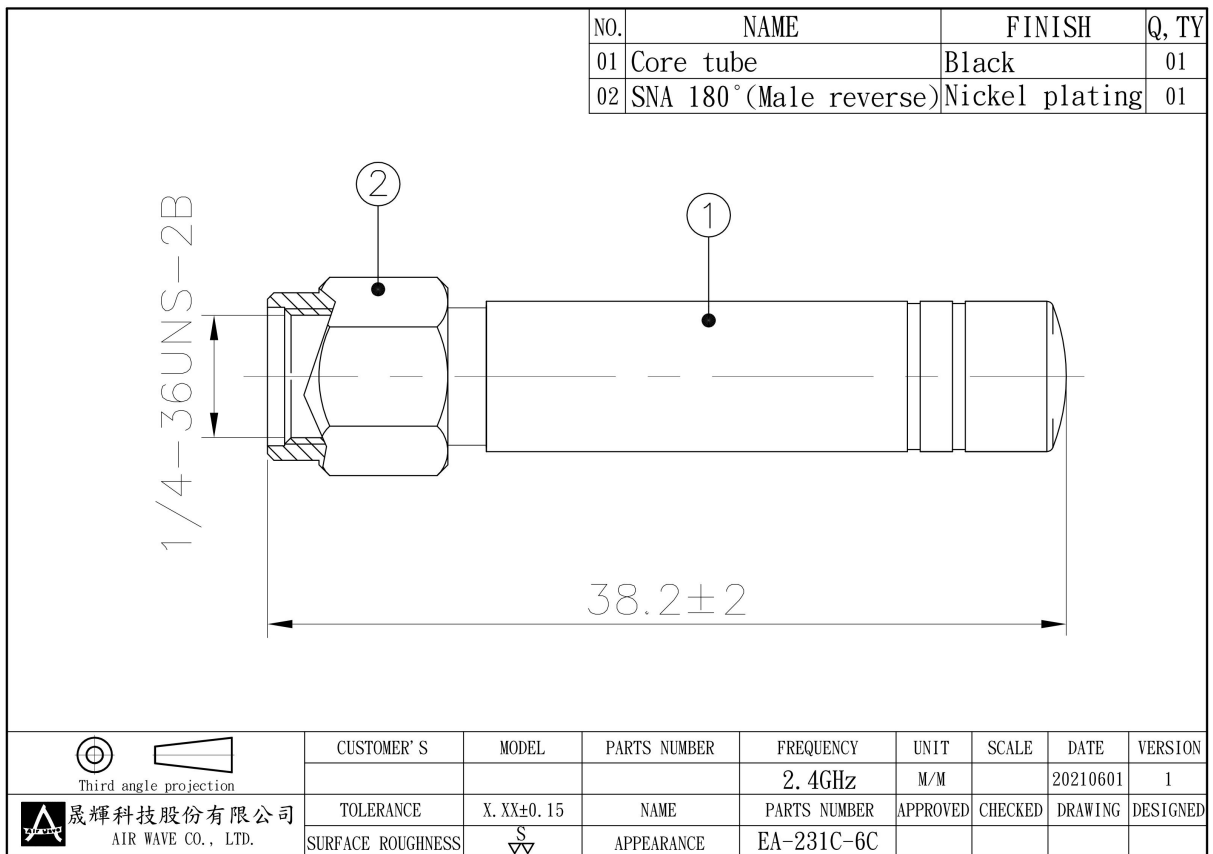
#### 1.1 Electrical Properties

Parameter	Description
Frequency Band	2.4 GHz
Nominal Impedance	50 ohm
Polarization	Vertical
V.S.W.R	2.0 : 1

#### 1.2 Mechanical Properties

Parameter	Description
Antenna Type	External Antenna
Antenna Material	TPE EL630
Touch Type	Screw Type
Connector Type	SMA 180°(Male reverse)
Antenna Dimensions	38.2mm ±2
Antenna Color	Black
Operating Temperature Range	-20°C~+60°C
Storage Temperature Range	-30°C~+70°C

## 2. Appearance



### 3. Return Loss, V.S.W.R. and Smith Chart

