

# INTRODUCTION

## 1. GENERAL DESCRIPTION

<b>AIR WAVE P/N</b>
<b>MA-92-01</b>

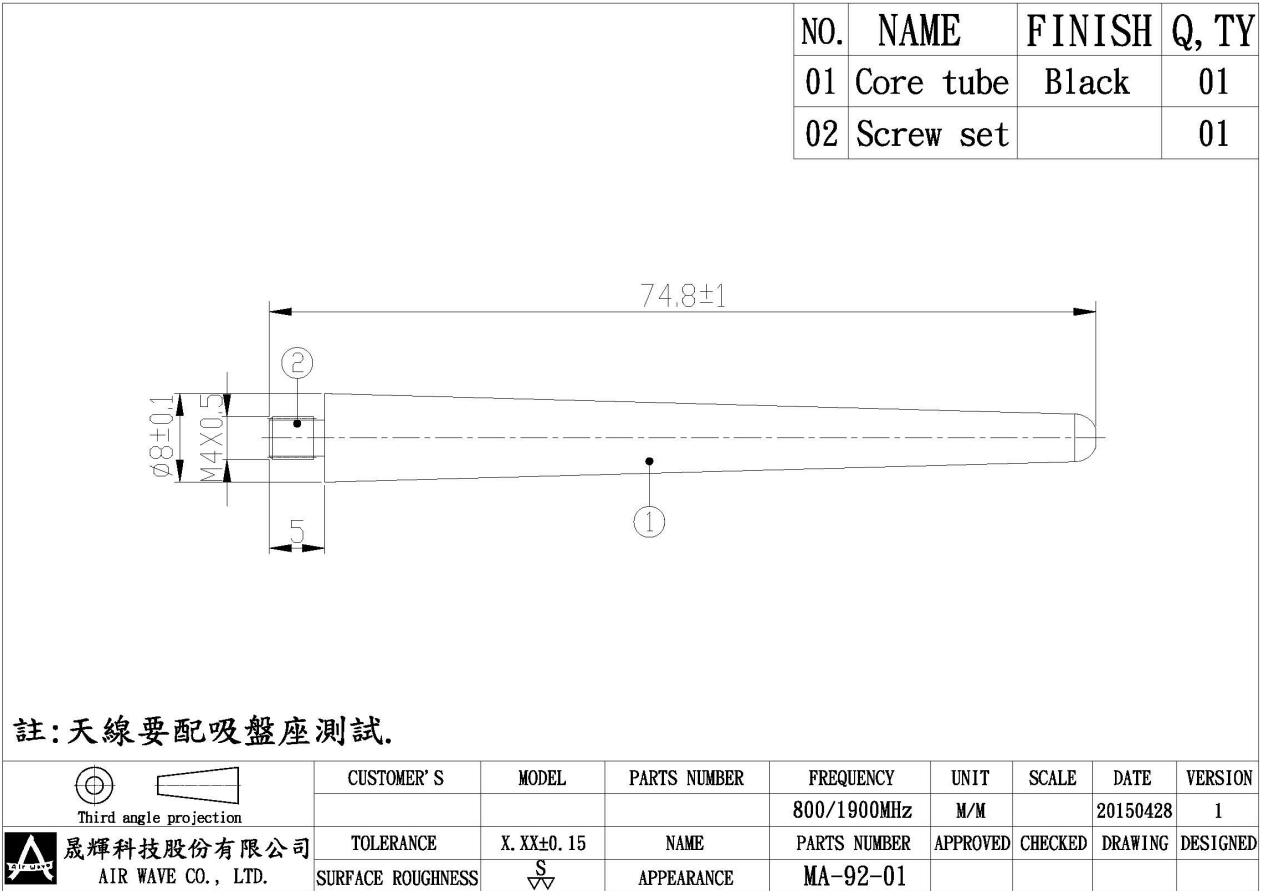
### 1.1 Electrica Properties

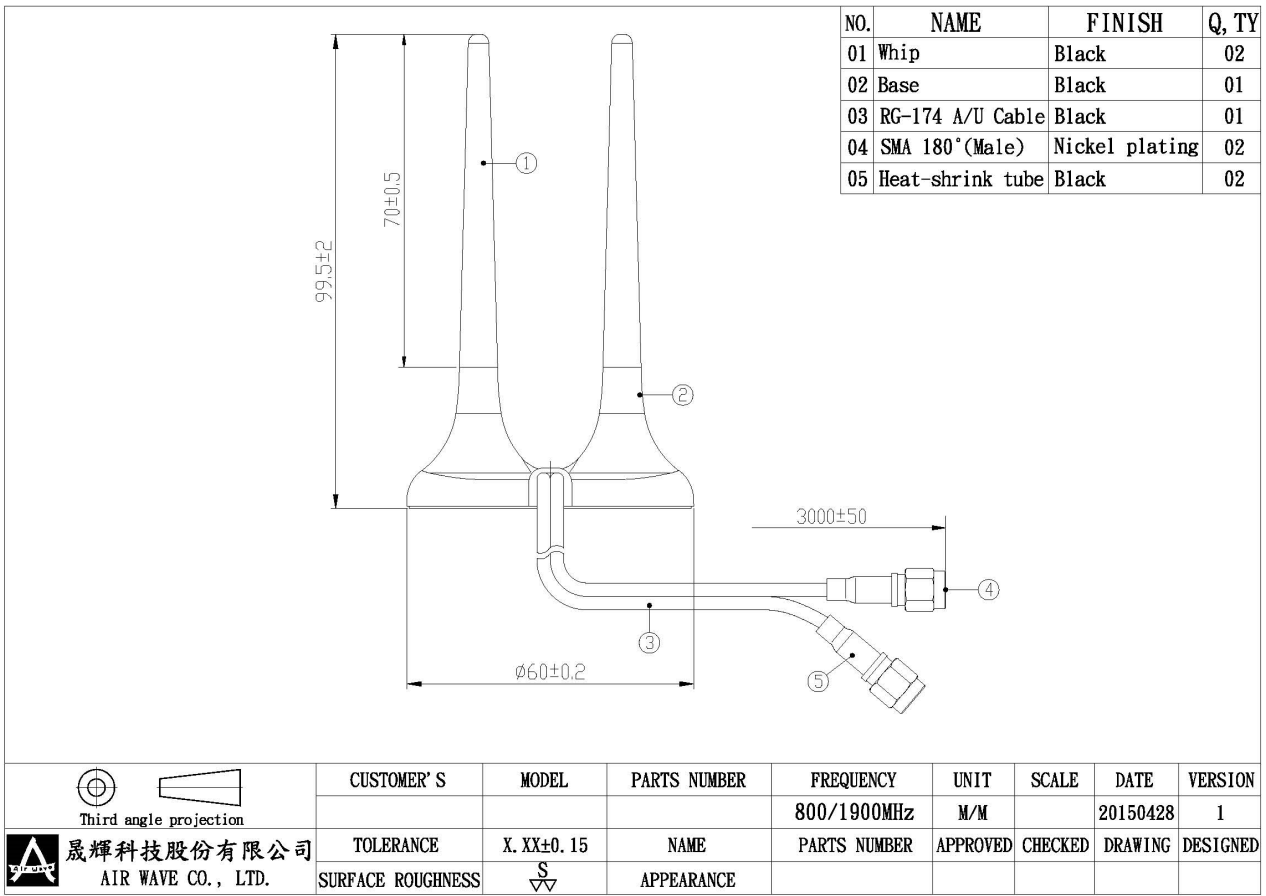
Parameter	Description
Frequency Band	800/1900MHz
Nominal Impedance	50 ohm
Polarization	Vertical
V.S.W.R	2.0:1

### 1.2 Mechanical Properties

Parameter	Description
Antenna Type	External Antenna
Touch Type	Screw Type
Connector Type	SMA 180° (Male)
Antenna Dimensions	99.5 mm ± 2
Antenna Cable Total Length	RG-174 A/U 3000 mm ± 50
Antenna Color	Black
Operating Temperature Range	-20°C~+60°C
Storage Temperature Range	-30°C~+70°C

**2. APPEARANCE:**





### 3. Return Loss, V.S.W.R. and Smith Chart

