

## INTRODUCTION

### 1. GENERAL DESCRIPTION

Model No
EA-90D

Below is a table summarizing the antenna design specification.

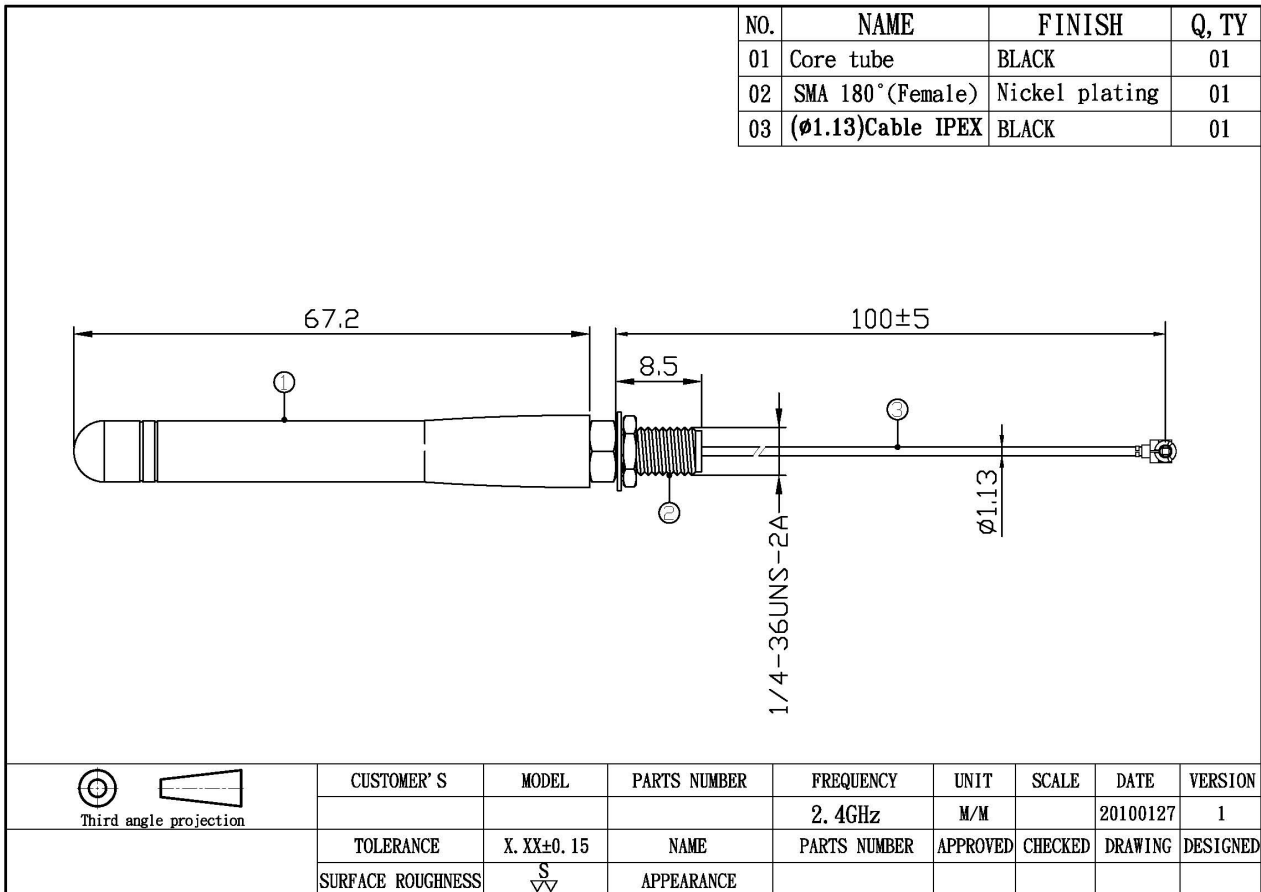
#### 1.1 Electrical Properties

Parameter	Description
Frequency Band	2.4 GHz
Nominal Impedance	50 ohm
Polarization	Vertical
Return Loss	Please See Data-1
V.S.W.R	2.0 : 1
Antenna Average Gain	2.3dBi
Note: Gain includes the cable loss	

#### 1.2 Mechanical Properties

Parameter	Description
Antenna Type	External Antenna
Antenna Material	PU
Touch Type	Screw Type
Connector Type	SMA 180° (Female)
Cable Total Length	Ø1.13 Cable I-PEX 100 ± 5
Antenna Dimensions	67.2
Antenna Color	Black
Operating Temperature Range	-20°C~+60°C
Storage Temperature Range	-30°C~+70°C

## 2. Appearance



**3. Return Loss, V.S.W.R. and Smith Chart**

