

---

## INTRODUCTION

This document provides a Sleeve Dipole Antenna design; this simulation is for wireless LAN.

### 1. GENERAL DESCRIPTION

Model No	AIR WAVE P/N
	EA-17C

Below is a table summarizing the antenna design specification.

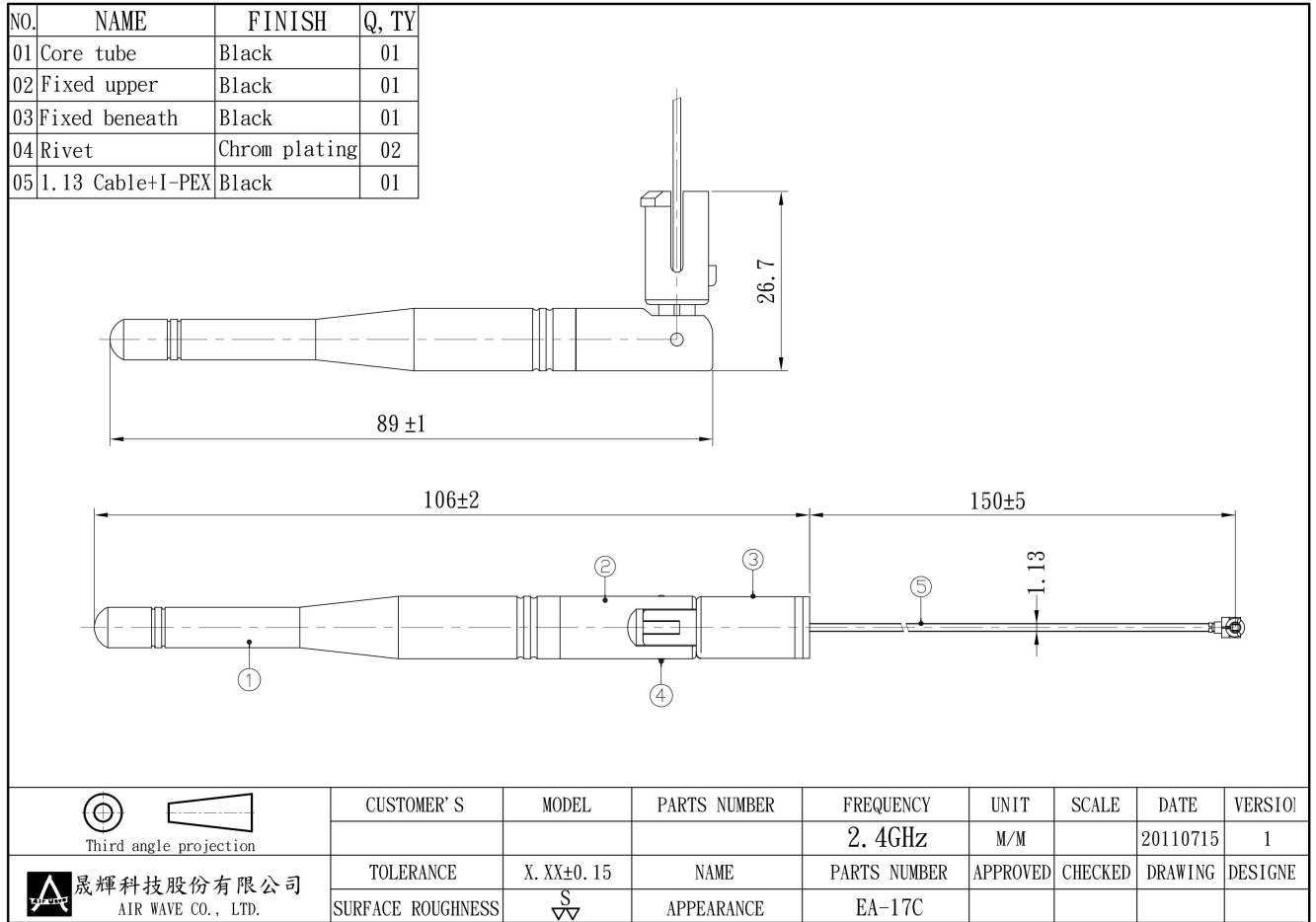
#### 1.1 Electrical Properties

Parameter	Description
Frequency Band	900/1800MHz
Nominal Impedance	50 ohm
Polarization	Vertical
Electrical Wave	1/4 $\lambda$ Dipole
Return Loss	Please See Data-1
V.S.W.R	4.0 : 1
Antenna Average Gain	0~3 dBi
Note: Gain includes the cable loss	

#### 1.2 Mechanical Properties

Parameter	Description
Antenna Type	External Antenna
Antenna Material	TPE
Antenna Dimensions	106mm $\pm$ 1
Antenna Cable Total Length	$\varnothing$ 1.13/100 $\pm$ 5
Antenna Color	Black
Operating Temperature Range	-20°C~+60°C
Storage Temperature Range	-30°C~+70°C

## 2. Appearance



3. Frequency

