

INTRODUCTION

1. GENERAL DESCRIPTION

Model No
MP-54B-7

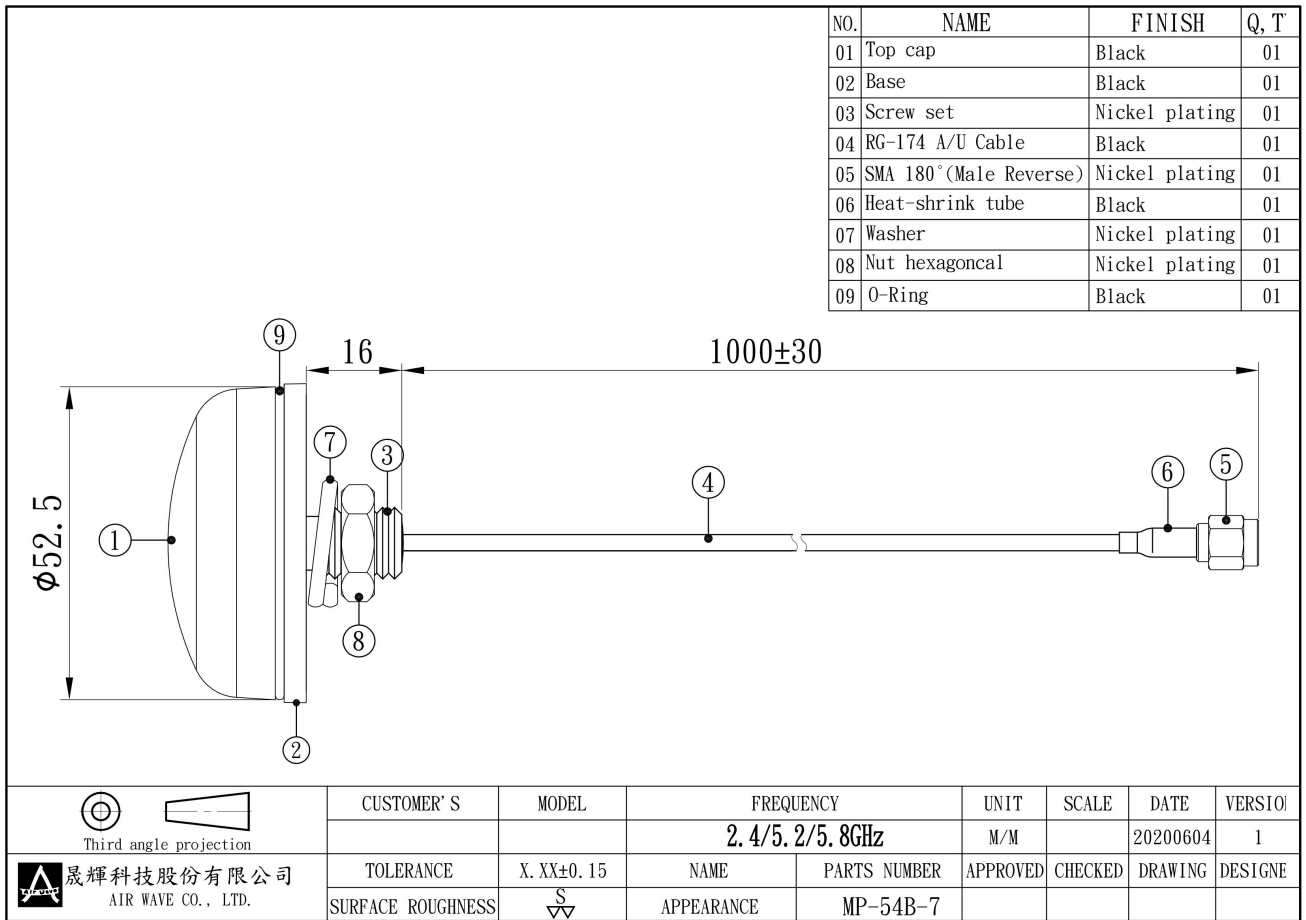
1.1 Electrical Properties

Parameter	Description
Frequency Band	2.4/5.2/5.8GHz
Nominal Impedance	50 ohm
V.S.W.R	2.8:1

1.2 Mechanical Properties

Parameter	Description
Connector Type	SMA (Male Reverse)
Antenna Dimensions	ϕ 52.5
Antenna Cable Total Length	RG-174/AU *1000 mm \pm 30
Antenna Color	Black
Ingress Protection Rating	IP66
Operating Temperature Range	-40°C~+85°C
Storage Temperature Range	-30°C~+70°C

2. Appearance



3. FREQUENCY

