

INTRODUCTION

1. GENERAL DESCRIPTION

Model No
MP-52-3

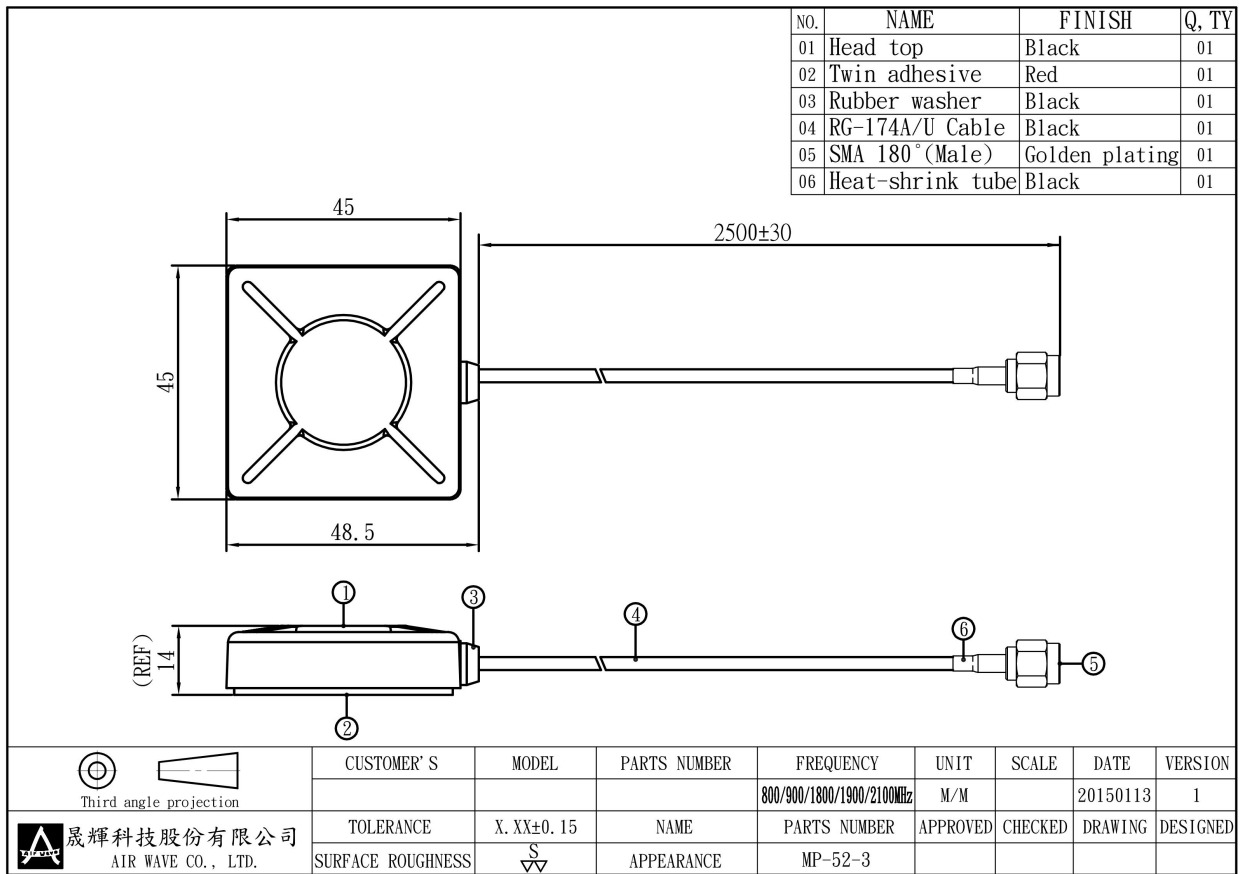
1.1 Electrical Properties

Parameter	Description
Frequency Band	800/900/1800/1900/2100 MHz
Nominal Impedance	50 ohm
Polarization	Vertical
V.S.W.R	2.0 : 1

1.2 Mechanical Properties

Parameter	Description
Touch Type	Screw Type
Connector Type	SMA 180° (Male)
Antenna Dimensions	45*45*14
Antenna Cable Total Length	RG-174A/U-2500 mm ± 30
Antenna Color	Black
Operating Temperature Range	-20°C~+60°C
Storage Temperature Range	-30°C~+70°C

2. Appearance



3. Return Loss, V.S.W.R. and Smith Chart

