

# INTRODUCTION

## 1. GENERAL DESCRIPTION

AIR WAVE P/N
EA-231J

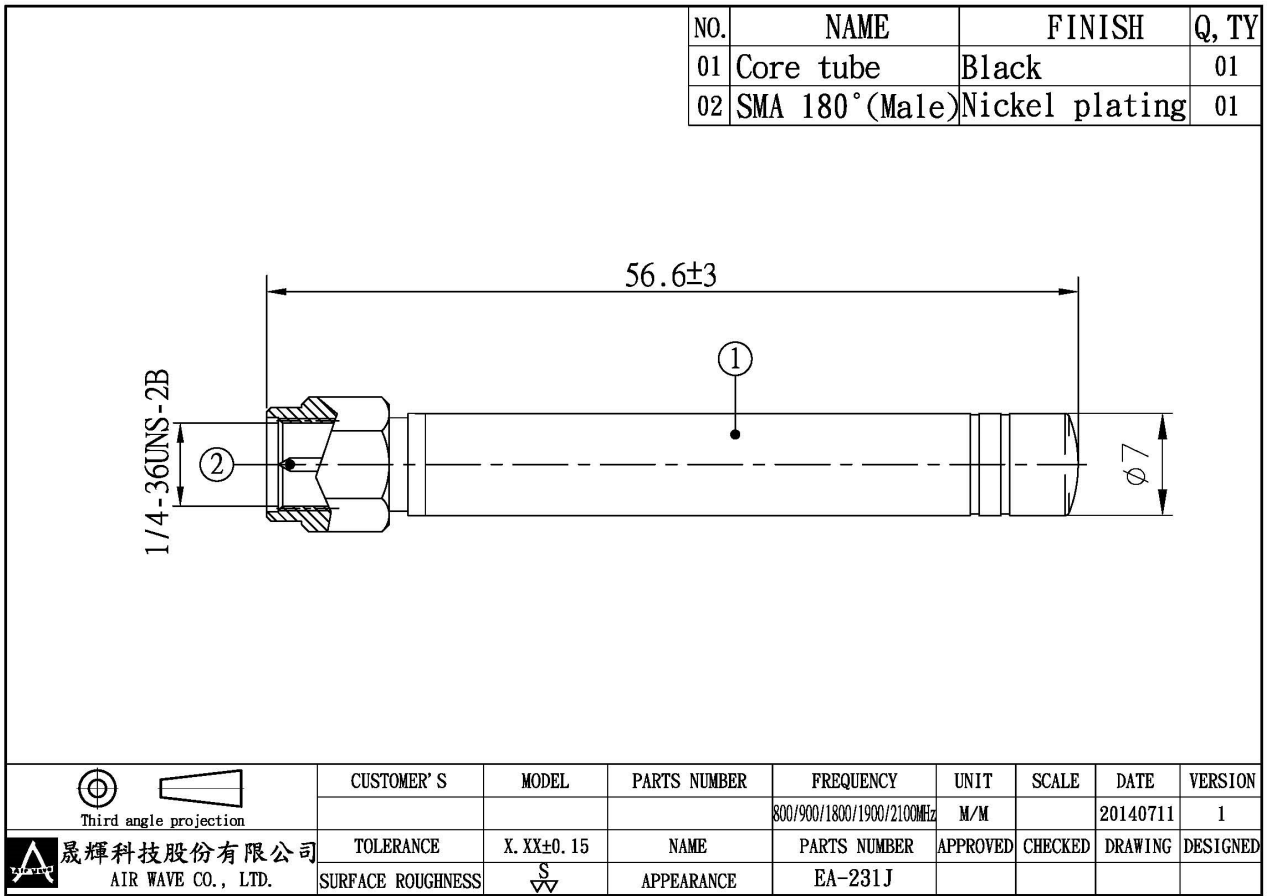
### 1.1 Electrical Properties

Parameter	Description
Frequency Band	800/900/1800/1900/2100 MHz
Nominal Impedance	50 ohm
Polarization	Vertical
V.S.W.R	3.0:1

### 1.2 Mechanical Properties

Parameter	Description
Antenna Type	External Antenna
Antenna Cover	PU
Touch Type	Screw Type
Connector Type	SMA 180° (Male)
Antenna Dimensions	56.6mm±3
Antenna Color	Black
Operating Temperature Range	-20°C~+60°C
Storage Temperature Range	-30°C~+70°C

**2. APPEARANCE:**



### 3. Return Loss, V.S.W.R. and Smith Chart

